

The AP Tech dynamic pressure transducers offer a wide dynamic range, quartz or lithium niobate sensing element and a long term stability. The PS2001 has a builtin IEPE amplifier and can be used at depth upto 50 metres.

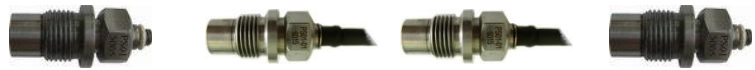
### Dynamic pressure transducers

PS01

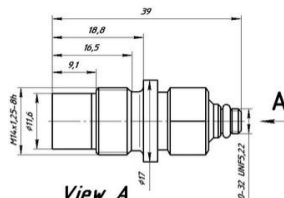
PS01-01

PS01-02

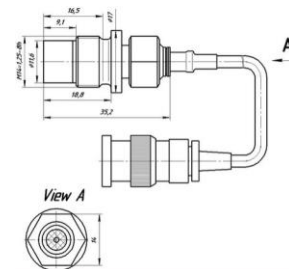
PS01-03



Parameter	Unit	PS01	PS01-01	PS01-02	PS01-03
Sensitivity	pC/bar	20	20	400	400
Measurement range	bar	0.1 to 250	0.1 to 250	0.1 to 250	0.1 to 250
Resonant frequency	kHz	> 120	> 120	> 120	> 120
Linearity	%	>2%	>2%	>2%	>2%
Temperature range	°C	-50 to +200	-50 to +200	-50 to +200	-50 to +200
Output signal polarity		positive	positive	positive	positive
Capacitance w.o. cable	pF	7 to 11	7 to 11	7 to 11	7 to 11
Insulation resistance	□	>10 <sup>10</sup>	>10 <sup>10</sup>	>10 <sup>10</sup>	>10 <sup>10</sup>
Sensor element		Quartz	Quartz	Lithium niobate	Lithium niobate
Housing material		Stainless steel	Stainless steel	Stainless steel	Stainless steel
Membrane material		Stainless steel	Stainless steel	Stainless steel	Stainless steel
Integral cable length	m	-	2	2	-
Cable connector		10-32 UNF	BNC	BNC	10-32 UNF
Connecting cable		AK04	-	-	AK04
Weight	gram	35	35	35	35



PS01/PS01-03



PS01-01/PS01-02